

# PLATINUM SMART-HEAT™ ELECTRIC



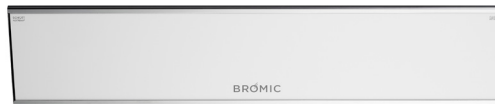
## KEY FEATURES

- ▶ **Flexible Mounting** including wall, ceiling and recessed options with minimal clearance requirements
- ▶ **Compact & Elegant Design** for seamless integration into design-focused spaces
- ▶ **Durable Construction** with a 304 stainless steel body and tinted ceramic-glass face
- ▶ **Customized Heat Output** in increments from 0–100% using the new Affinity Collection of controls
- ▶ **Marine Grade Available** built with 316-grade stainless steel to counteract corrosive coastal environments

## COLOR OPTIONS



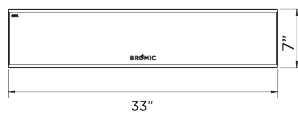
Black



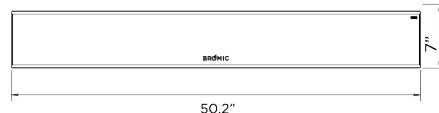
White

## DIMENSIONS

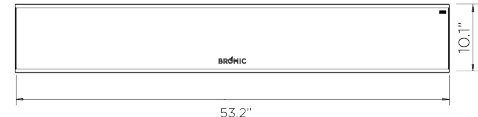
2300W



3400W



4500W



## MOUNTING OPTIONS



Wall Mounted



Ceiling Mounted



Standard Recessed Kit

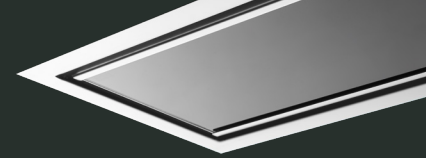


Low Clearance Recess Kit

Discover more about Platinum Smart-Heat™ Electric

Learn more at [bromic.com](https://bromic.com)

**BROMIC**  
HEATING



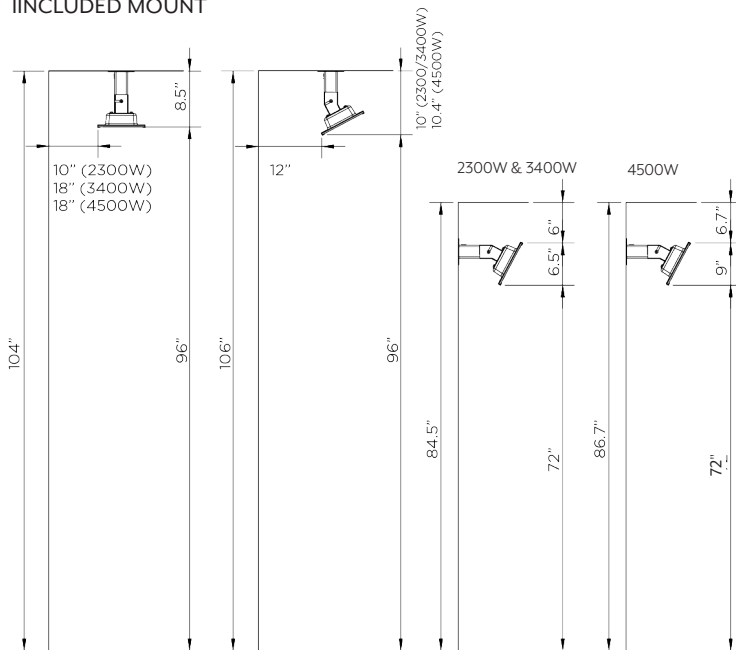
## SPECIFICATIONS

PRODUCT NUMBER BLACK   WHITE	WATTAGE	HEAT AREA	WEIGHT	RATED CURRENT*	MINIMUM FLOOR CLEARANCE	APPROVAL CERTIFICATION	IP RATING	CONTROL OPTIONS
BH0320003   BH0320007	2300W	65ft²	16.5lbs.	220-240V/9.6A	WALL 72" CEILING 96"	INTERTEK ETL / cETL 5001799	IP54	Affinity On/Off Affinity Dimmer Manual Wall Switch
BH0320005   BH0320008	3400W	108ft²	22lbs.	220-240V/14.2A				
BH3622000   BH3622001	4500W	143ft²	33lbs.	220-240V/18.8A				
MARINE PRODUCT NUMBER BLACK   WHITE								
BH0320015   BH0320017	2300W	65ft²	16.5lbs.	220-240V/9.6A	WALL 72" CEILING 96"	INTERTEK ETL / cETL 5001799	IP54	Affinity On/Off Affinity Dimmer Manual Wall Switch
BH0320016   BH0320018	3400W	108ft²	22lbs.	220-240V/14.2A				
BH3622002   BH3622003	4500W	143ft²	33lbs.	220-240V/18.8A				

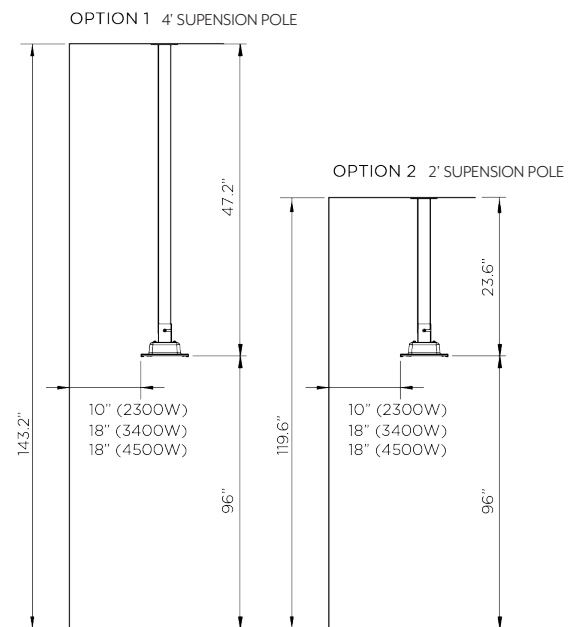
\*Also available in 208V

## CLEARANCES

### INCLUDED MOUNT



### MOUNTING ACCESSORIES



### RECESSED

#### STANDARD RECESS KIT

Refer to Installation Manual. 10" height above heater required. If you don't have 10", use the Low Clearance Recess Kit.

#### LOW CLEARANCE RECESS KIT

