

AFFINITY ECLIPSE

SMART-HEAT™ CONTROLS



KEY FEATURES

- ▶ **Various Models Available:** 1 and 5 channel input options for our fixed Eclipse Pendant, with the 1 channel Eclipse Dimmer Series already included in our Eclipse Portable outdoor heater
- ▶ **Wifi & Bluetooth Connectivity:** Using the enabled Wi-Fi (compatible with 2.4GHz) or Bluetooth connectivity, control and customize your comfort via the Bromic Heating app
- ▶ **Flexible Heat & Light Control:** Instantly and precisely adjust heat and light output down to 1% increments
- ▶ **Advanced Features:** Set timers and schedules, create heating zones and manage multiple sites
- ▶ **Admin-Friendly:** Multi-user management with customizable admin controls

AFFINITY ECLIPSE CONTROLS



Eclipse 1 Channel



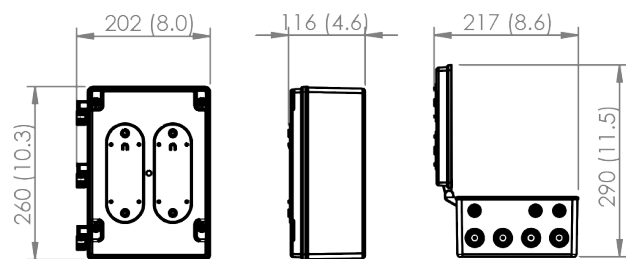
Eclipse 5 Channel



Expansion Board
(Included with 5 Channel model)

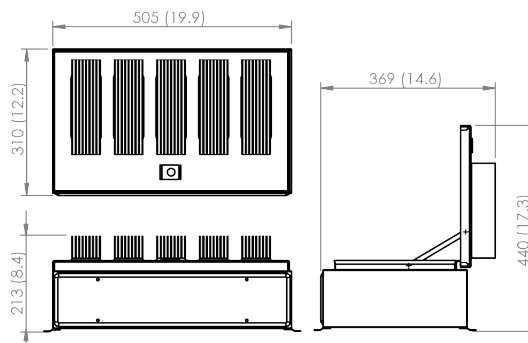
DIMENSIONS

Affinity Eclipse 1 Channel



Dimensions shown in mm (inches)

Affinity Eclipse 5 Channel



Discover more about *Affinity Eclipse Smart-Heat™ Controls*

Learn more at bromic.com

BROMIC
HEATING

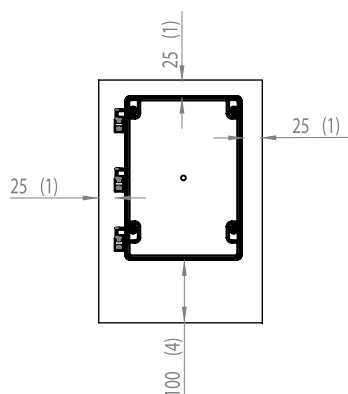


SPECIFICATIONS

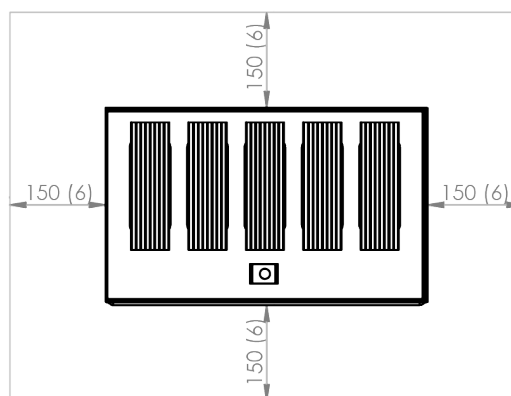
	PRODUCT NUMBER	MODEL	HEATER COMPATIBILITY	WEIGHT	OPERATING CAPACITY	VOLTAGE	IP RATING
Affinity Eclipse Controller	BH8380051	1 Channel	Eclipse Electric Eclipse Portable	1.6 kgs.	4000W	220-240V	IP54
	BH8380055	5 Channel	Eclipse Electric	15 kgs.	6000W (30A Max)	220-240V 3 Phase	

CLEARANCES

ECLIPSE 1 CHANNEL



ECLIPSE 5 CHANNEL

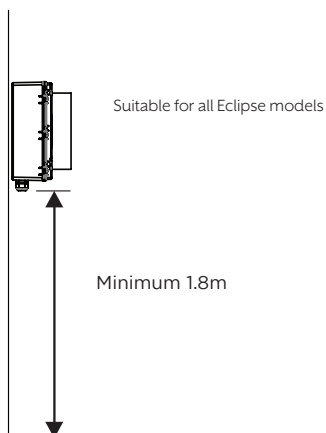


Dimensions shown in mm (inches)

MOUNTING OPTIONS

WALL MOUNTING

Mounting is required at 1800mm mounting height for the Eclipse 5 Channel control. Location should be selected to avoid accidental contact.



CEILING MOUNTING

