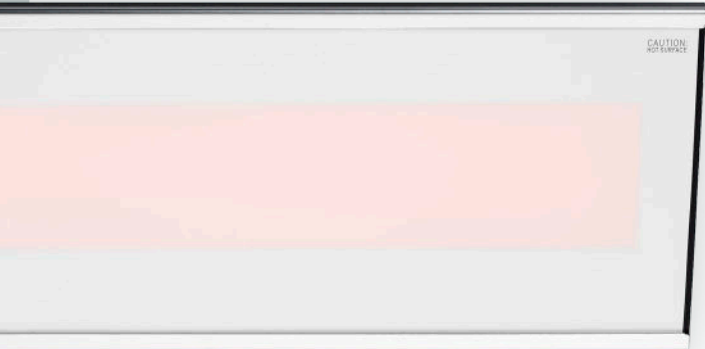






Extends the Season

Instead of closing your patio when the weather gets cold, add outdoor heating to extend the outdoor season. Adding restaurant heaters increases the number of patrons that can be accommodated during colder months, resulting in a maximized return on investment.



Let's take a look at the potential return on investment for a single, Platinum Electric 4500W installed heater.

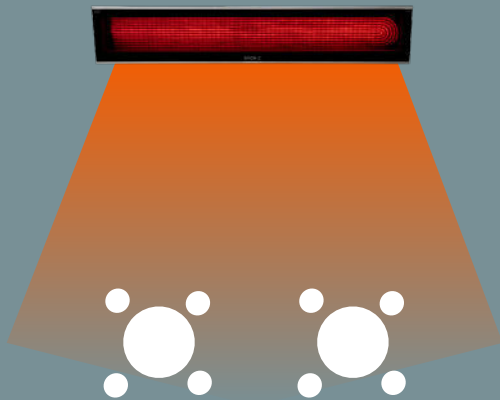
 **\$36***
Revenue per Person

 **\$144**
Revenue per Table of 4

* 2018 Dining Trends Survey - Zagat

2 TABLES

Number of tables a 4500W heater covers



2 x \$144 = \$288

6 WEEKS

Additional time outdoor heating can extend patio seating



Additional table revenue for 6 weeks at 2 turns a night:
\$288 table revenue x 84 tables served

TOTAL REVENUE FOR 12 WEEKS:

\$24,192

TOTAL INVESTMENT BREAKDOWN

\$2,183
Cost of a 4500W Heater

+

\$5.04
Operation Cost Per Day

=

\$2,603
Total Investment



22,889

Extra Revenue Per Heater