



ECLIPSE SMART-HEAT™ ELECTRIC LED REPLACEMENT

BY BROMIC

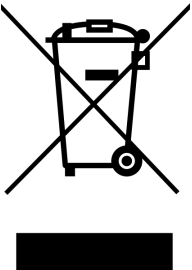
INSTRUCTION MANUAL



WARNING

**PLEASE READ AND SAVE THESE
INSTRUCTIONS FOR FUTURE REFERENCE**

IMPORTANT NOTES & WARNINGS	3
STEP 1: LOCATE THE LED STRIP	3
STEP 2: REMOVE THE OLD LED STRIP	4-5
STEP 3: INSTALL THE NEW LED STRIP	6-7
STEP 4: TEST THE INSTALLATION	7

Correct disposal of this product	
	<p>This marking indicates that this product should not be disposed with other household wastes throughout the EU. To prevent possible harm to the environment or human health from uncontrolled waste disposal, recycle it responsibly to promote the sustainable reuse of material resources. To return your used device, please use the return and collection systems or contact the retailer from whom the product was purchased so that they may organise environmentally safe recycling.</p>



Head Office: 10 Phiney Place, Ingleburn, NSW 2565 Australia
Telephone: 1300 276 642 (within Australia) or +61 2 9748 3900 (from overseas) **Fax:** +61 2 9748 4289
Email: enquiries@bromic.com **Web:** www.bromic.com/heat

Note: Bromic Pty Ltd reserves the right to make changes to specifications, parts, components and equipment without prior notification. This installation, operation and service manual may not be reproduced in any form without prior written consent from Bromic Pty Ltd.



IMPORTANT



Warning

This heater **MUST** be installed by an authorised/licenced person. Do not perform maintenance, or carry out installation or assembly procedure while electrical power is switched on.



Warning

ELECTRICAL SHOCK HAZARD! Serious injury or death may occur. Disconnect from electrical supply before installing this LED. Read and follow installation requirements outlined in this manual. The appliance **MUST** be connected to a properly grounded electrical source. Isolate mains before installing. Use only with a properly secured LED.

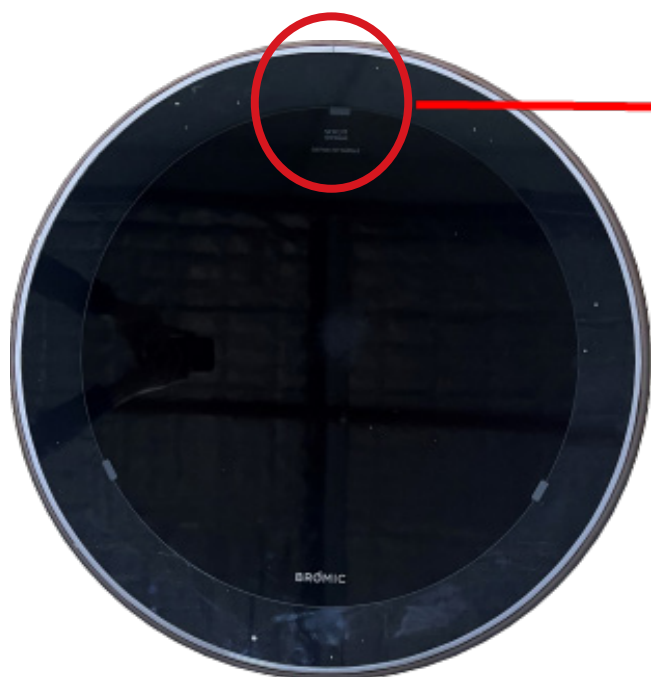
This manual provides clear, step-by-step instructions for safely replacing your LED strip. Please ensure all necessary tools are available and disconnect mains power before beginning. Follow each step carefully to avoid damage to the LED strip or surrounding components.

Required Tools

- Small Flat Head Screwdriver
- Long Nose Pliers (Optional)

STEP 1: LOCATE THE LED STRIP

1. Locate the edge of the LED strip positioned above the **Schott Logo**

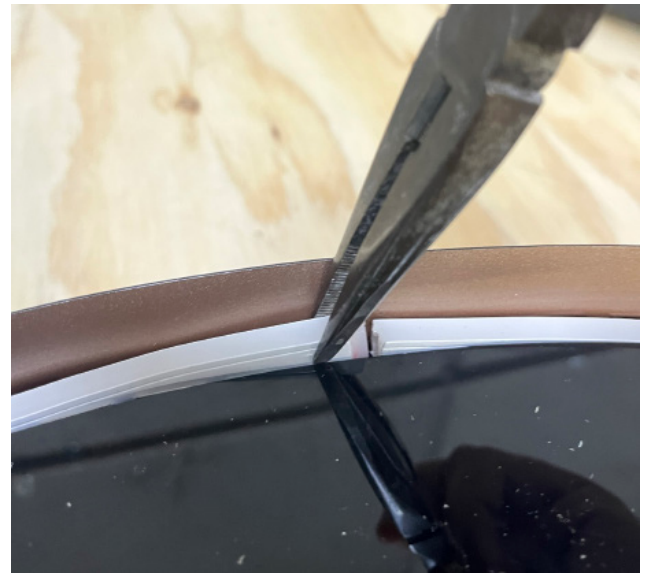


STEP 2 : REMOVE THE OLD LED STRIP

1. Insert a small flat-head screwdriver into the gap at the end of the LED strip. Gently pry upwards while inserting the screwdriver ~10mm to release the strip from the rail.



2. Once the end is exposed, carefully pull it out by hand or with long nosed pliers



STEP 2 : REMOVE THE OLD LED STRIP

3. Remove the wiring from the cavity until the black connector is accessible.
4. Unclip the black connector to detach the LED strip.



5. Slowly remove the entire strip from the rail, taking care not to damage the rail or surrounding components.

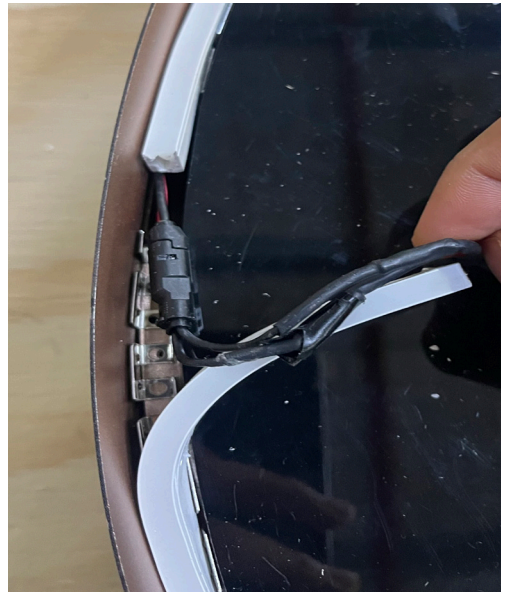


STEP 3: INSTALL THE NEW LED STRIP

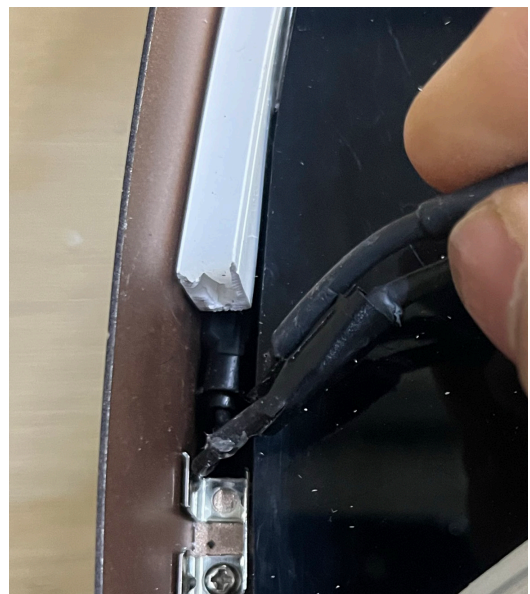
1. Unpack the new LED strip, ensuring it is free from damage.

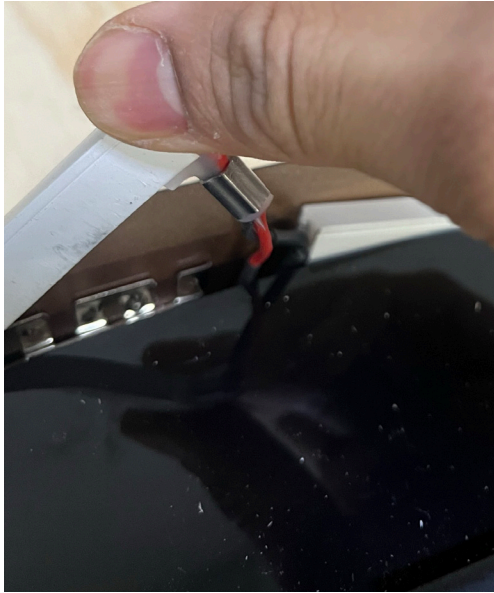


2. Reconnect the black connector to the new LED strip.



3. Neatly tuck the wiring back into the cavity avoiding pinching or stripping the wires.





4. Align the new LED strip along the rail, ensuring proper positioning.



STEP 4: TEST THE INSTALLATION

1. Ensure the LED has been installed correctly as shown in Step 3.
2. Restore mains power and verify the new LED functions correctly.

If LED does not illuminate, double-check all connections before troubleshooting further