

TUNGSTEN

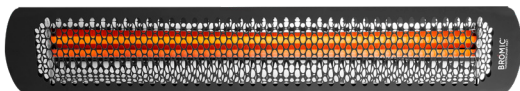
SMART-HEAT™ ELECTRIC



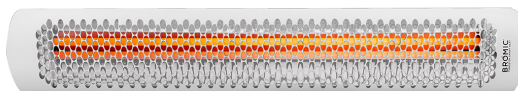
KEY FEATURES

- ▶ **Extensive Range of Heat Outputs:** Available in models ranging from 2000W to 6000W
- ▶ **Timeless Design:** Showcases a stylish honeycomb mesh front with a high-temperature, corrosion-resistant coating and durable stainless-steel construction. Available in black and white finishes ensuring suitability for all environments
- ▶ **Versatile Mounting Options:** Supports wall, ceiling, and recessed installations, providing versatility to suit various space requirements
- ▶ **Directional Heating:** Adjustable bracket system allows for precise heat direction, optimizing comfort for specific seating or lounge areas

COLOR OPTIONS



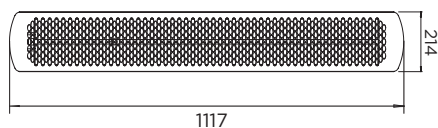
Black



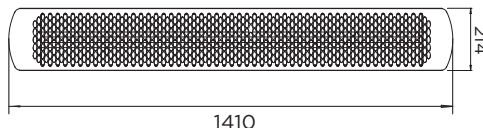
White

DIMENSIONS

2000/4000W



3000/6000W



MOUNTING OPTIONS



Wall Mounted



Ceiling Mounted

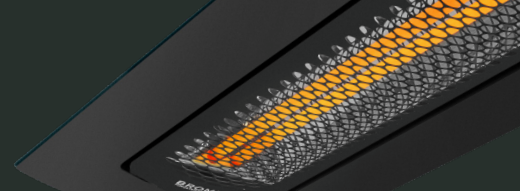


Flush Mounted

Discover more about *Tungsten Smart-Heat™ Electric*

Learn more at bromic.com

BROMIC
HEATING



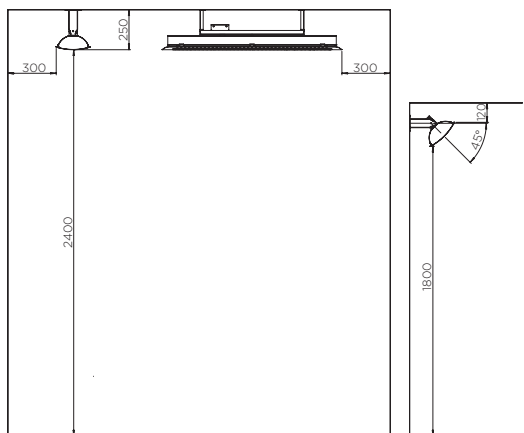
SPECIFICATIONS

PRODUCT NUMBER BLACK WHITE	WATTAGE	HEAT AREA	WEIGHT	RATED CURRENT	MINIMUM FLOOR CLEARANCE	APPROVAL CERTIFICATION	IP RATING	CONTROL OPTIONS
BH0420022-1 BH0420026-1	2000W	6m ²	9kgs.	220-240V/8.3A	WALL 1800mm CEILING 2400mm	CE Approved	IPX4	Affinity On/Off Affinity Dimmer Manual Wall Switch
BH0420023-1 BH0420027-1	3000W	9m ²	10kgs.	220-240V/12.5A				
BH0420023-1 BH0420027-1	4000W	11m ²	9kgs.	220-240V/16.6A				
BH0420025-1 BH0420029-1	6000W	13m ²	10kgs.	220-240V/25A				

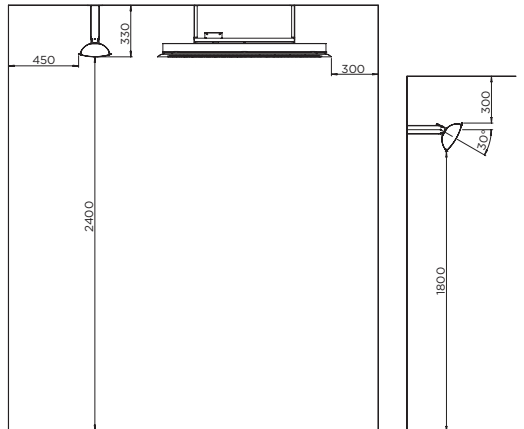
CLEARANCES

INCLUDED MOUNT

2000W & 3000W

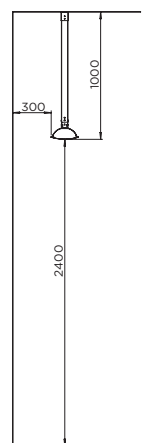


4000W & 6000W

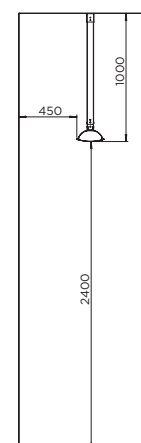


MOUNTING ACCESSORIES

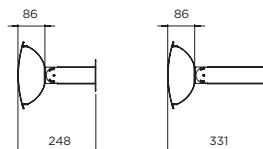
2000W & 3000W
900mm MOUNT POLE



4000W & 6000W
900mm MOUNT POLE



BRACKET (INCLUDED)



CEILING RECESS

