

PLATINUM SMART-HEAT™ ELECTRIC



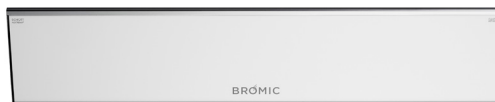
KEY FEATURES

- ▶ **Flexible Mounting** including wall, ceiling and recessed options with minimal clearance requirements
- ▶ **Compact & Elegant Design** for seamless integration into design-focused spaces
- ▶ **Durable Construction** with a 304 stainless steel body and tinted ceramic-glass face
- ▶ **Customized Heat Output** in increments from 0–100% using the new Affinity Collection of controls
- ▶ **Marine Grade Available** built with 316-grade stainless steel to counteract corrosive coastal environments

COLOR OPTIONS



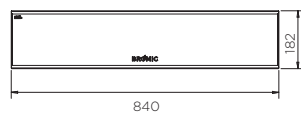
Black



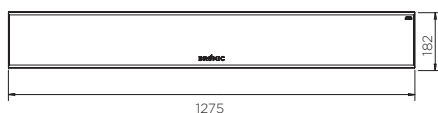
White

DIMENSIONS

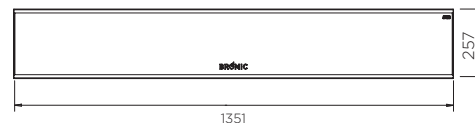
2300W



3400W



4500W



MOUNTING OPTIONS



Wall Mounted



Ceiling Mounted



Standard Recessed Kit

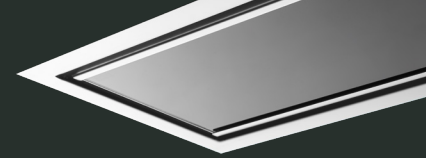


Low Clearance Recess Kit

Discover more about Platinum Smart-Heat™ Electric

Learn more at bromic.com.au

BROMIC
HEATING

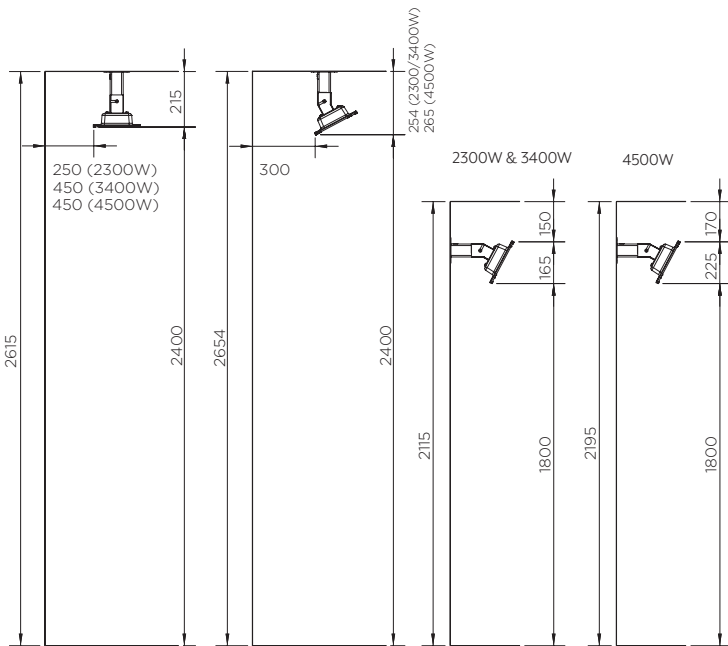


SPECIFICATIONS

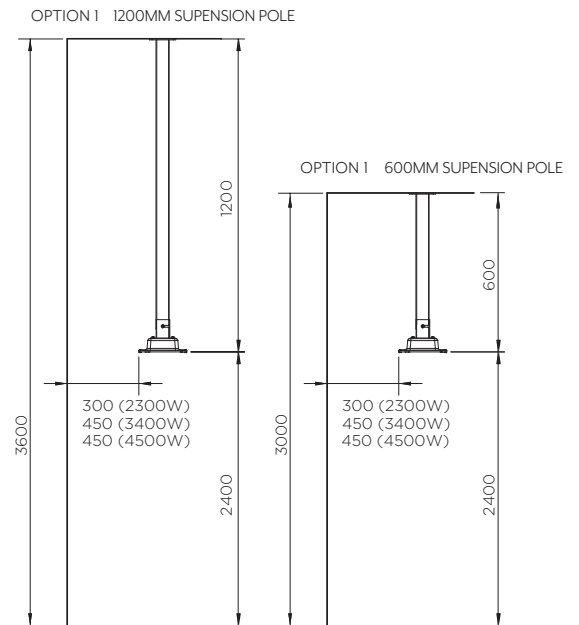
PRODUCT NUMBER BLACK WHITE	WATTAGE	HEAT AREA	WEIGHT	RATED CURRENT	MINIMUM FLOOR CLEARANCE	APPROVAL CERTIFICATION	IP RATING	CONTROL OPTIONS
2620240 2620247	2300W	6m²	8kgs.	220-240V/9.6A	WALL 1800mm CEILING 2400mm	SAA-221323-EA	IP54	Affinity On/Off Affinity Dimmer
2620245 2620248	3400W	10m²	10kgs.	220-240V/14.2A				
2622000 2622001	4500W	12m²	15kgs.	220-240V/18.8A				
MARINE PRODUCT NUMBER BLACK WHITE								
2620251 2620253	2300W	6m²	8kgs.	220-240V/9.6A	WALL 1800mm CEILING 2400mm	SAA-221323-EA	IP54	Affinity On/Off Affinity Dimmer Manual Wall Switch
2620252 2620254	3400W	10m²	10kgs.	220-240V/14.2A				
2622002 2622003	4500W	12m²	15kgs.	220-240V/18.8A				

CLEARANCES

INCLUDED MOUNT



MOUNTING ACCESSORIES



RECESSED

STANDARD RECESS KIT

Refer to Installation Manual. 250mm height above heater required (350mm required for 4500W). If you don't have 254mm (350mm for 4500W), use the Low Clearance Recess Kit.

LOW CLEARANCE RECESS KIT

